

LITHIUM-ION BATTERIES

LITHIUM IRON PHOSPHATE BATTERY

ELECTRICAL SPECIFICATIONS

| | |
|-----------------------------|---------------|
| Nominal Voltage | 12.8 V |
| Nominal Capacity | 80 Ah |
| Capacity @ 0.2C | >290 min |
| Energy | 1024 Wh |
| Resistance | < 30 mΩ |
| Efficiency | 99% |
| Self Discharge | <3% per Month |
| Maximum Modules in Series | 4 |
| Maximum Modules in Parallel | No limited |

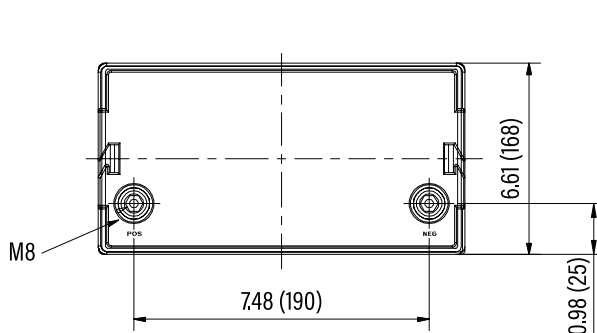
DISCHARGE SPECIFICATIONS

| | |
|--------------------------------------|-------|
| Maximum Continuous Discharge Current | 80 A |
| Peak Discharge Current | 160 A |
| Recommended Low Voltage Disconnect | 11 V |
| PCM Discharge Voltage Cut-Off | 10 V |
| Reconnect Voltage | 12 V |
| Short Circuit Protection | Yes |

TEMPERATURE SPECIFICATIONS

| | |
|------------------------------|-----------------------------|
| Discharge Temperature | -4 to 140 °F (-20 to 60 °C) |
| Charge Temperature | 32 to 131 °F (0 to 55 °C) |
| Storage Temperature | -4 to 140 °F (-20 to 60 °C) |
| PCM High Temperature Cut-Off | 176 °F (80 °C) |

DIMENSIONAL SPECIFICATIONS

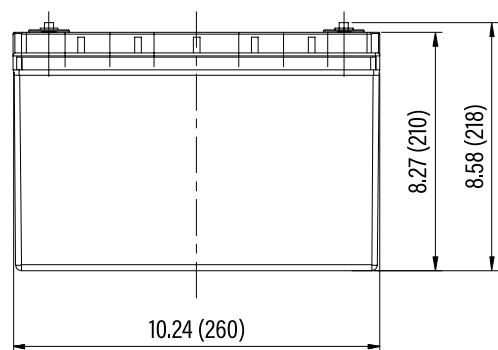


MECHANICAL SPECIFICATIONS

| | |
|------------------------|---------------------|
| Dimensions (L x W x H) | 260 x 168 x 218 mm |
| Weight | 9.7 kg |
| Terminal Type | M8 |
| Case Material | ABS |
| Enclosure Protection | IP65 |
| Cell Type - Chemistry | LiFePO ₄ |

CHARGE SPECIFICATIONS

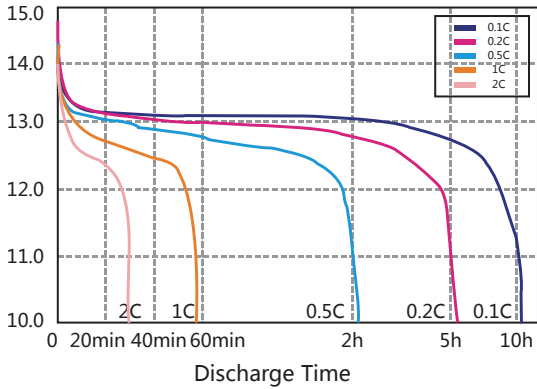
| | |
|----------------------------|-----------------|
| Recommended Charge Current | <30 A |
| Maximum Charge Current | 80A |
| Recommended Charge Voltage | 14.2 V - 14.6 V |
| PCM Charge Voltage Cut-Off | 15.6 V |
| Reconnect Voltage | 15.2 V |
| Balancing Voltage | 14.4 V |



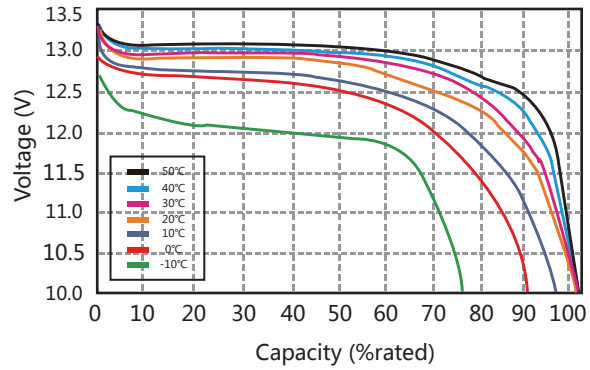
LITHIUM-ION BATTERIES

PERFORMANCE CHARACTERISTICS

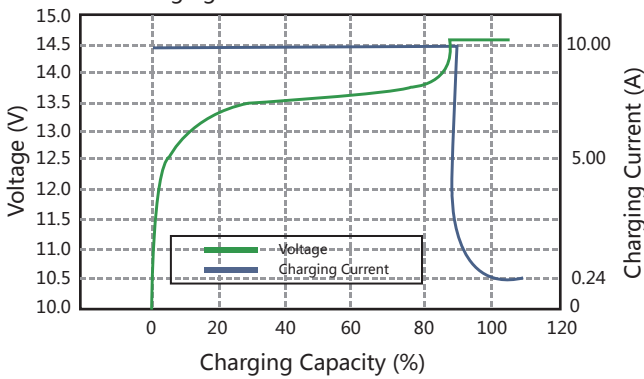
Different Rate Discharge Curve @25°C



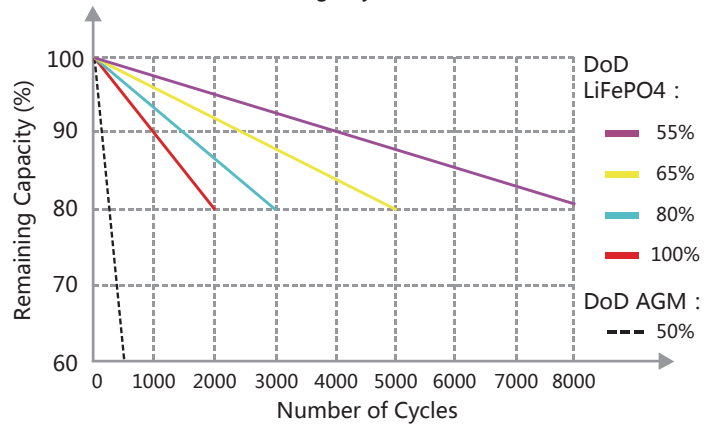
Different Temperature Discharge Curve @0.5C



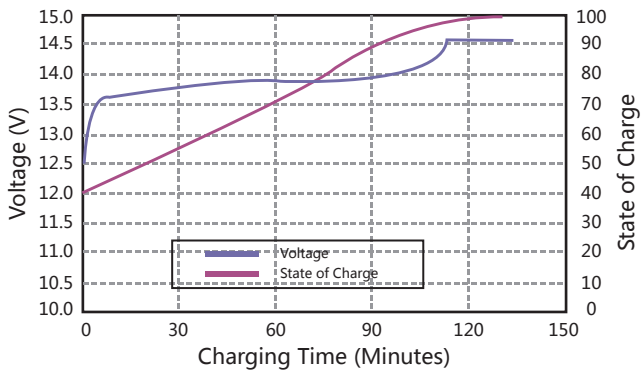
Charging Characteristics @0.5C 25°C



Different DoD Discharge Cycle Life @1C



State of Charge Curve @0.5C 25°C



Different Temperature Self Discharge Curve

