

LITHIUM-ION BATTERIES

LITHIUM IRON PHOSPHATE BATTERY

ELECTRICAL SPECIFICATIONS

Nominal Voltage	12.8 V
Nominal Capacity	50 Ah
Capacity @ 0.2C	>290 min
Energy	640 Wh
Resistance	<50 mΩ
Efficiency	99%
Self Discharge	<3% per Month
Maximum Modules in Series	4

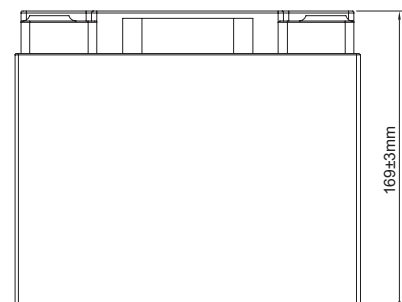
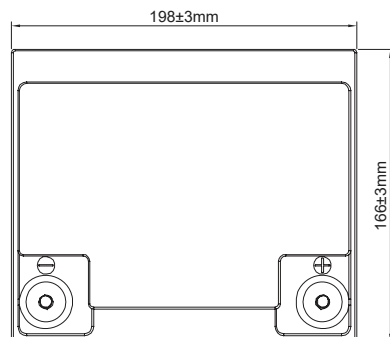
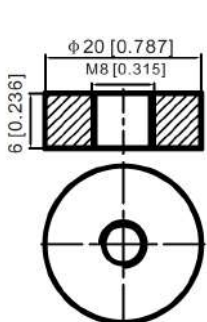
DISCHARGE SPECIFICATIONS

Maximum Continuous Discharge Current	50 A
Peak Discharge Current	100 A
Recommended Low Voltage Disconnect	11 V
PCM Discharge Voltage Cut-Off	10 V
Reconnect Voltage	12 V
Short Circuit Protection	Yes

TEMPERATURE SPECIFICATIONS

Discharge Temperature	-4 to 140 °F (-20 to 60 °C)
Charge Temperature	32 to 131 °F (0 to 55 °C)
Storage Temperature	-4 to 140 °F (-20 to 60 °C)
PCM High Temperature Cut-Off	176 °F (80 °C)

DIMENSIONAL SPECIFICATIONS



MECHANICAL SPECIFICATIONS

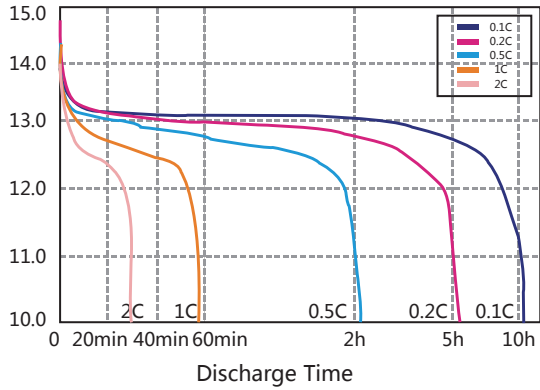
Dimensions (L x W x H)	198 x 166 x 169 mm
Weight	6.7 kg
Terminal Type	M8
Terminal Torque	80 - 100 in-lbs (9 - 11 N-m)
Case Material	ABS
Enclosure Protection	IP65
Cell Type - Chemistry	

CHARGE SPECIFICATIONS

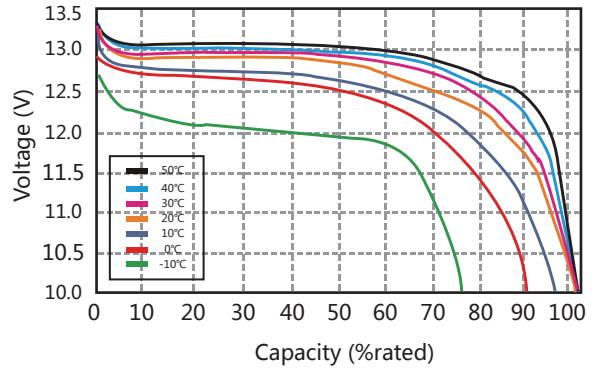
Recommended Charge Current	<25 A
Maximum Charge Current	50 A
Recommended Charge Voltage	14.2 V - 14.6 V
PCM Charge Voltage Cut-Off	15.6 V
Reconnect Voltage	15.2 V
Balancing Voltage	14.4 V

PERFORMANCE CHARACTERISTICS

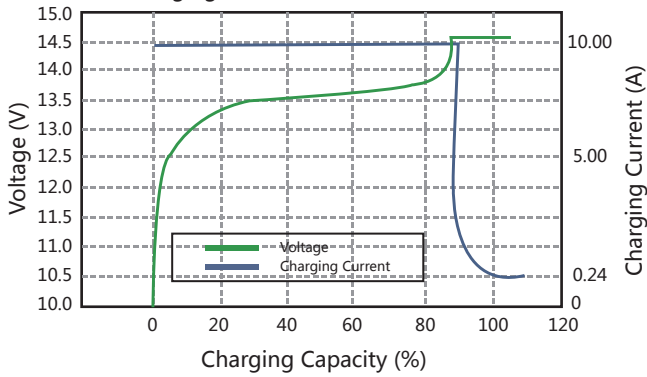
Different Rate Discharge Curve @25°C



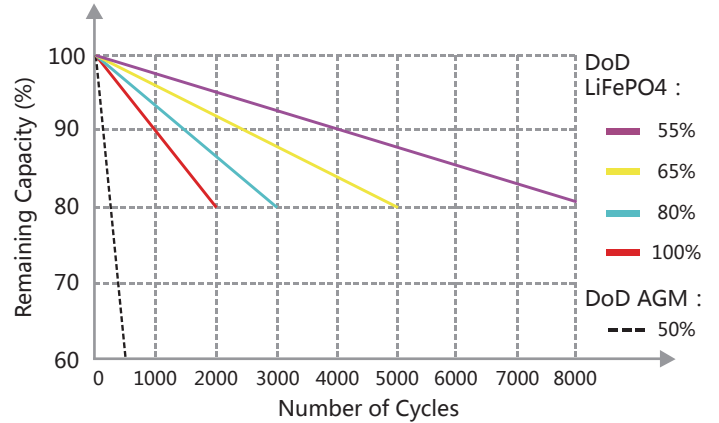
Different Temperature Discharge Curve @0.5C



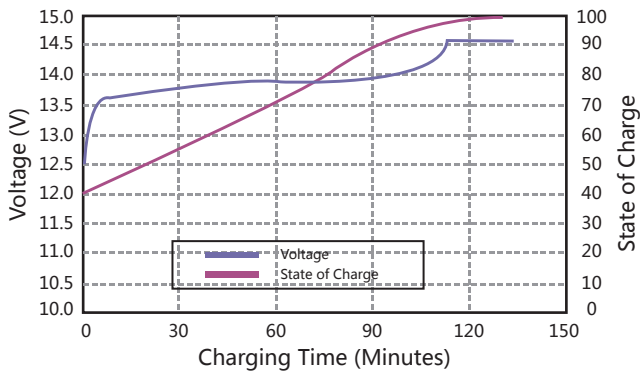
Charging Characteristics @0.5C 25°C



Different DoD Discharge Cycle Life @1C



State of Charge Curve @0.5C 25°C



Different Temperature Self Discharge Curve

