

LITHIUM-ION BATTERIES

LITHIUM IRON PHOSPHATE BATTERY

ELECTRICAL SPECIFICATIONS

Nominal Voltage	12.8 V
Nominal Capacity	100 Ah
Capacity @ 0.2C	>290 min
Energy	1280 Wh
Resistance	<20 mΩ
Efficiency	99%
Self Discharge	<3% per Month
Maximum Modules in Series	4
Maximum Modules in Parallel	No limited

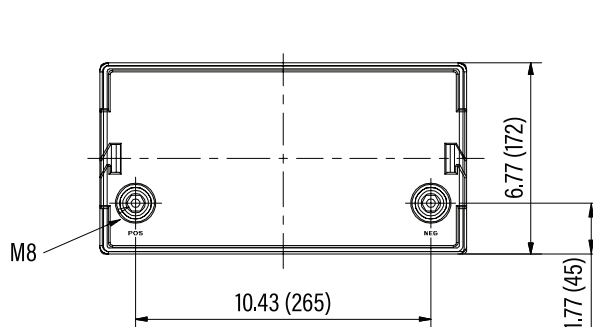
DISCHARGE SPECIFICATIONS

Maximum Continuous Discharge Current	100 A
Peak Discharge Current	200 A
PCM Discharge Current Cut-Off	450 A (±50 A)
Recommended Low Voltage Disconnect	11 V
PCM Discharge Voltage Cut-Off	10 V
Reconnect Voltage	12 V
Short Circuit Protection	Yes

TEMPERATURE SPECIFICATIONS

Discharge Temperature	-4 to 140 °F (-20 to 60 °C)
Charge Temperature	32 to 131 °F (0 to 55 °C)
Storage Temperature	-4 to 140 °F (-20 to 60 °C)
PCM High Temperature Cut-Off	176 °F (80 °C)

DIMENSIONAL SPECIFICATIONS

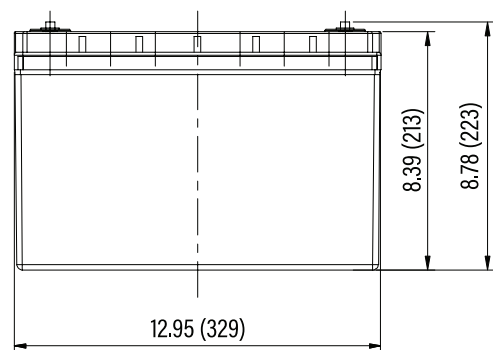


MECHANICAL SPECIFICATIONS

Dimensions (L x W x H)	329 x 172 x 223 mm
Weight	11.8 kg
Terminal Type	M8
Case Material	ABS
Enclosure Protection	IP65
Chemistry	LiFePO ₄

CHARGE SPECIFICATIONS

Recommended Charge Current	< 50 A
Maximum Charge Current	100A
Recommended Charge Voltage	14.2 V - 14.6 V
PCM Charge Voltage Cut-Off	15.6 V
Reconnect Voltage	15.2 V
Balancing Voltage	14.4 V



LITHIUM-ION BATTERIES

BATTERY APP

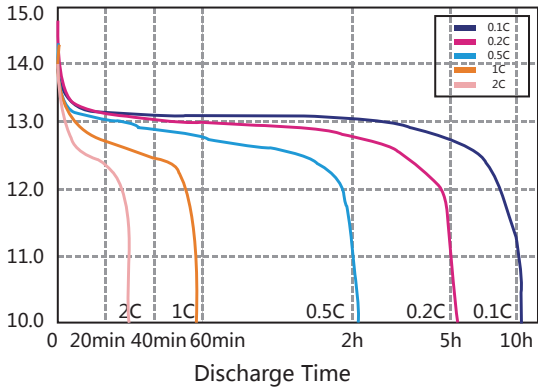
Connect the battery via Bluetooth to your smartphone (iOS/Android).
The battery app will display real-time data on the interface of the app:
State of charge, voltage, capacity, temperature, cycle life, ...



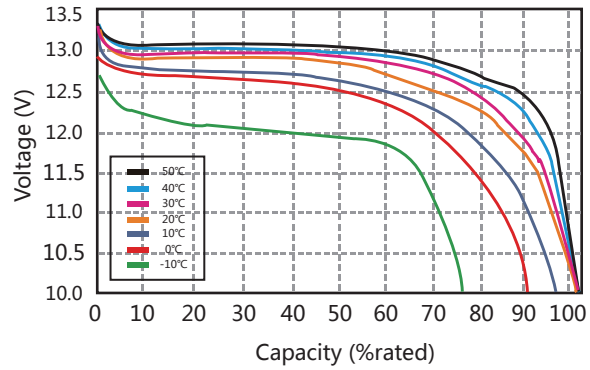
LITHIUM-ION BATTERIES

PERFORMANCE CHARACTERISTICS

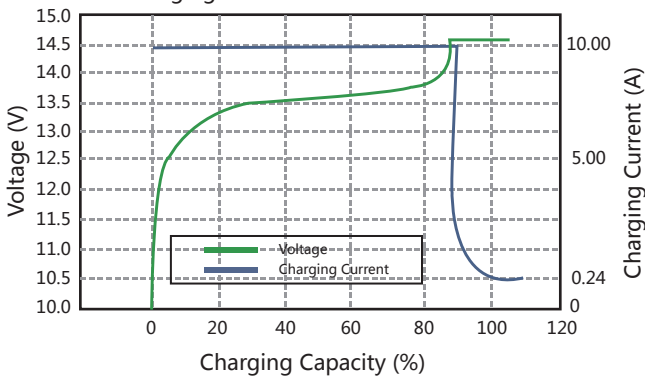
Different Rate Discharge Curve @25°C



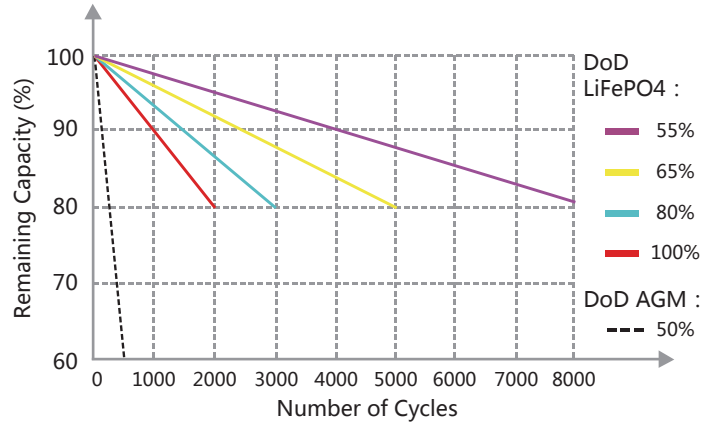
Different Temperature Discharge Curve @0.5C



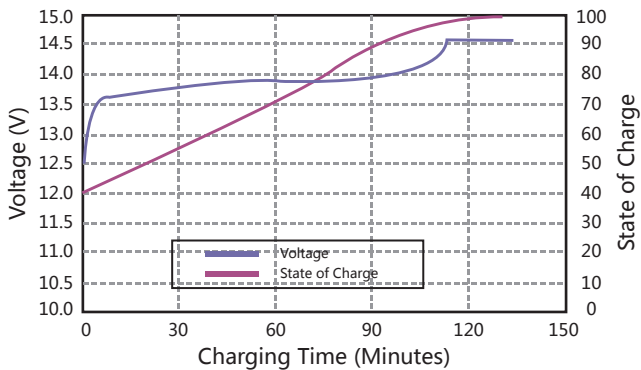
Charging Characteristics @0.5C 25°C



Different DoD Discharge Cycle Life @1C



State of Charge Curve @0.5C 25°C



Different Temperature Self Discharge Curve

